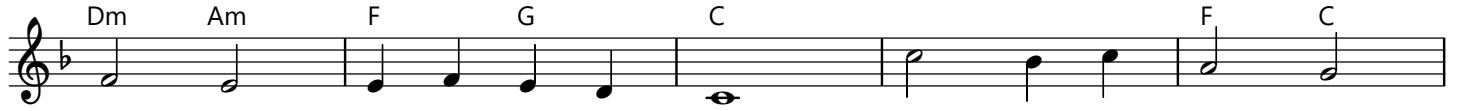


Draw Nigh and Take the Body of the Lord

Neale / ANIMA CHRISTI



1. Draw nigh and take the Bod - y of the Lord, and drink the
2. Sal - va - tion's giv - er, Christ the on - ly Son, by that his
3. Vic - tims were of - fered by the Law of old that, in a
4. Ap - proach ye then with faith - ful hearts sin - cere, and take the
5. With heav'n - ly bread makes them that hun - ger whole, gives liv - ing



1. ho - ly Blood for you out - poured; saved by that Bod - y,
2. Cross and Blood the vic - t'ry won; off - ered was he for
3. type, cel - es - tial mys - t'ries told; he, ran - som - er from
4. safe - guard of sal - va - tion here; he that in this world
5. wa - ters to each thirst - y soul; Al - pha - O - me - ga,



1. hal - lowed by that Blood, where - by re - freshed, we of - fer thanks to God.
2. great - est and for least, him - self the Vic - tim and him - self the Priest.
3. death and light from shade, giv - eth his ho - ly grace, his saints to aid.
4. rules his saints, and shields, to all be - liev - ers life e - ter - nal yields.
5. un - to whom shall bow all on the last day; he is with us now.

Inspiration: "Sancte venite, Corpus Christi sumite" from the "Antiphony of Bennchar", 7th cent.
Lyrics: 10.10.10; John M. Neale, 1818-1866, in his "Medieval Hymns and Sequences", 1851.
Music: ANIMA CHRISTI; William J. Maher, SJ, 1823-1877, in "Mission Hymns", 1864.